

PLANNING DATA

PROJECT ADDRESS: 89 DOUGLASS WAY
ATHERTON, CALIFORNIA

APN: 070-371-160

ZONING DISTRICT: R-1A

LOT AREA: 0.675 ACRES (29,387.00 SQ. FT.)

SETBACKS: 58'-7" FRONT AND REAR PER CALC.
(30% OF MEAN DISTANCE OF LOT DEPTH)

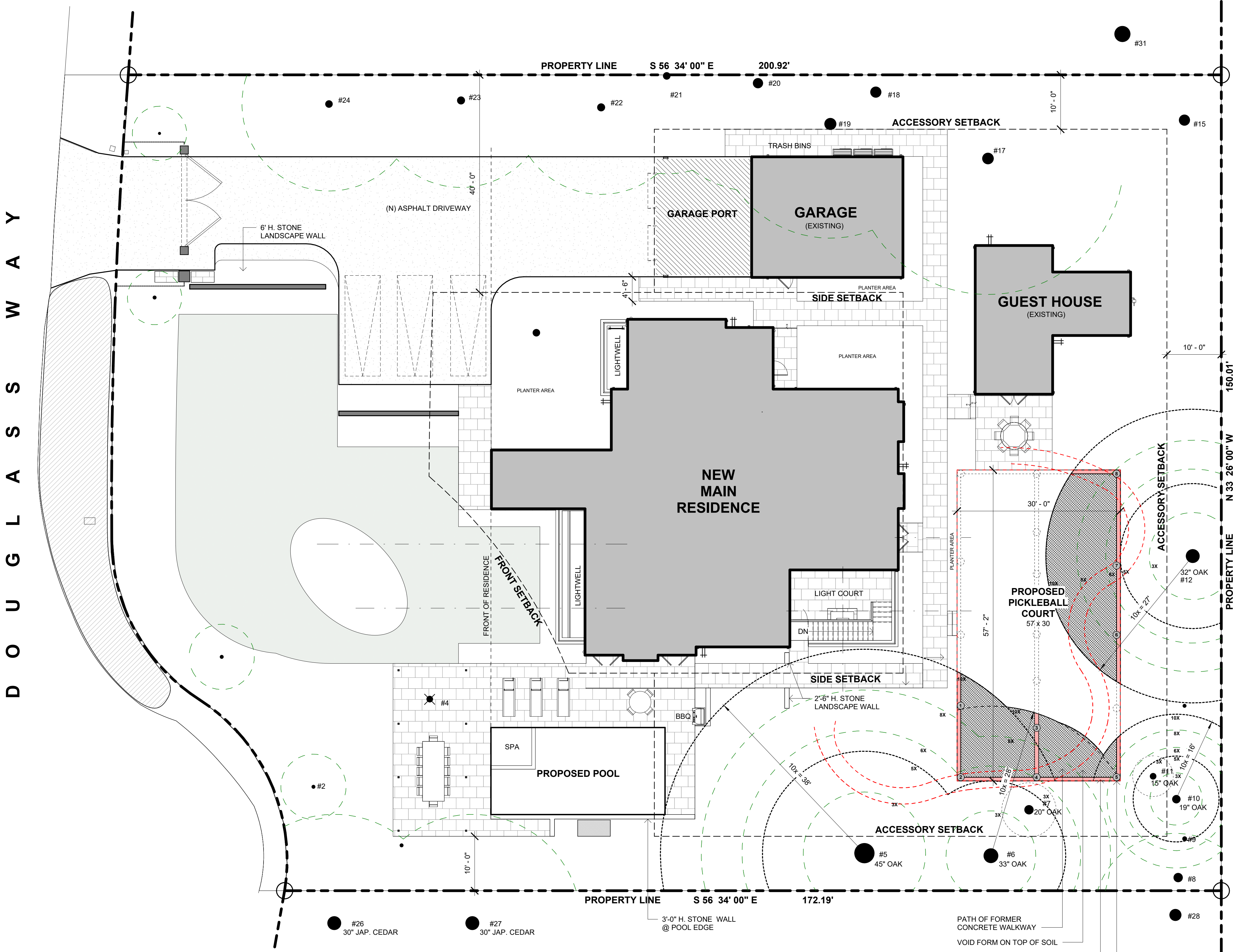
40'-0" SIDES PER TABLE 17.38.010-1

ACCESSORY STRUCTURES

SETBACKS: 10'-0" SIDE AND REAR

120'-0" FROM STREET OR 30'-0" BEHIND
PRIMARY DWELLING

8'-0" SEPARATION TO PRIMARY DWELLING



PROPOSED PICKLE BALL COURT ROOT COVERAGE

ROOT COVERAGE OF FULL COURT (INCLUDING NON-INTRUSIVE VOID FORMS ON TOP OF SOIL)

TREE # 5
TPZ AREA = 4,418 SF
ROOT INTRUSION AREA = 227 SF => 5.14%
(227 SF / 4,418 SF = 0.0514)

TREE # 6
TPZ AREA = 2,452 SF
ROOT INTRUSION AREA = 330 SF => 13.46%
(330 SF / 2,452 SF = 0.1346)

TREE # 7
TPZ AREA = 908 SF
ROOT INTRUSION AREA = 267 SF => 29.41%
(267 SF / 908 SF = 0.2941)

TREE # 10
TPZ AREA = 764 SF
ROOT INTRUSION AREA = 26 SF => 3.40%
(26 SF / 764 SF = 0.034)

TREE # 11
TPZ AREA = 491 SF
ROOT INTRUSION AREA = 56 SF => 11.41%
(56 SF / 491 SF = 0.1141)

TREE # 12
TPZ AREA = 2,290 SF
ROOT INTRUSION AREA = 419 SF => 18.30%
(419 SF / 2,290 SF = 0.1830)

ROOT INTRUSION COVERAGE OF GRADE BEAM ONLY AT 10" GRADE DEPTH

TREE # 5
TPZ AREA = 4,418 SF
ROOT INTRUSION AREA = 30 SF => 0.68%
(30 SF / 4,418 SF = 0.0068)

TREE # 6
TPZ AREA = 2,452 SF
ROOT INTRUSION AREA = 37 SF => 1.51%
(37 SF / 2,452 SF = 0.0151)

TREE # 7
TPZ AREA = 908 SF
ROOT INTRUSION AREA = 31 SF => 3.41%
(31 SF / 908 SF = 0.0341)

TREE # 10
TPZ AREA = 764 SF
ROOT INTRUSION AREA = 8 SF => 1.05%
(8 SF / 764 SF = 0.0105)

TREE # 11
TPZ AREA = 491 SF
ROOT INTRUSION AREA = 7 SF => 1.43%
(56 SF / 491 SF = 0.0143)

TREE # 12
TPZ AREA = 2,290 SF
ROOT INTRUSION AREA = 34 SF => 1.48%
(34 SF / 2,290 SF = 0.0148)

ROOT INTRUSION COVERAGE OF PIERS ONLY @ 16" DIAMETER

TREE # 5
TPZ AREA = 4,418 SF
ROOT INTRUSION AREA = 6 SF => 0.14%
(6 SF / 4,418 SF = 0.00136)

TREE # 6
TPZ AREA = 2,452 SF
ROOT INTRUSION AREA = 8 SF => 0.33%
(8 SF / 2,452 SF = 0.0033)

TREE # 7
TPZ AREA = 908 SF
ROOT INTRUSION AREA = 6 SF => 0.66%
(6 SF / 908 SF = 0.0066)

TREE # 10
TPZ AREA = 764 SF
ROOT INTRUSION AREA = 2 SF => 0.26%
(2 SF / 764 SF = 0.0026)

TREE # 11
TPZ AREA = 491 SF
ROOT INTRUSION AREA = 2 SF => 0.41%
(2 SF / 491 SF = 0.0041)

TREE # 12
TPZ AREA = 2,290 SF
ROOT INTRUSION AREA = 6 SF => 0.26%
(6 SF / 2,290 SF = 0.0026)

NIC PERSSON, AIA

THE PERSSON RESIDENCE / REMODEL

89 DOUGLASS WAY
ATHERTON, CALIFORNIA

PICKLEBALL COURT

Date: 8/20/23

Job: 89DWAC

SSP3

8/29/2023 3:11:07 PM